



TYPE-7 GOLF MANSION

A VILLA INSPIRED BY CONTEMPORARY
COURTYARD LIVING CRAFTED BY MODERN LIFESTYLE.





Descriptions

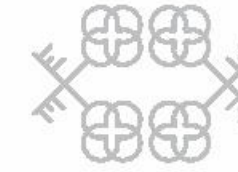
- **The Villa has 5 levels with the following key features:**
5 bedrooms with attached dresser & toilet including a junior master bedroom & master bedroom with master toilet, he & she dresser, living & dining, meditation garden, kitchen with kitchen yard, powder room, private lawn, 4 car parking, lift, party hall / multipurpose hall, open-to-sky private pool, 1 utility, 2 maid's room & toilet, semi covered Balinese style spa bed, show kitchen, creative loft, store & toilet

Upper Ground Floor

- Golf cart movement in the entire 90 acres enables safety for pedestrians with no vehicular movement on the ground floor, so that the kids & the elderly can roam around safely
- Resort like entrance foyer where a 140 sq.ft. meditation garden with a provision for oxygen wall inside your own villas
- Your private pool & garden gets elevated around 2m from the golf course which takes care of the view & the privacy
- 270 sq.ft. living area which is triple height & 200 sq.ft. formal dining facing the pool & the golf course adds another edge to luxury
- 175 sq.ft. island kitchen which has a separate kitchen yard & direct connectivity to lower ground floor
- As the luxury adds up, you also have framed wider views towards the golf course & the provision of private lift

Lower Ground Floor - Bachelor's Pad

- Breathe in the fresh air in your 215sq.ft. garden located beside your 180sq.ft. bedroom
- Sip a glass of wine, dipping feet in your pool or party hard in your 225sq.ft. party lounge with a private bar
- With 4 car parks, two maid's rooms with better habitable spaces & utility, this villa also takes care of your service requirements



First Floor - The Junior's Domain

- As you come on the upper level, the aroma of the meditation garden takes over the bridges that take you to the destination
- 250sq.ft. junior master bedroom with a wonderful dresser & a luxurious toilet, is something to show-off
- A 100sq.ft. family lounge floats inside the triple height space of the living area from where you can overlook & wave a Hi to your guest
- Both the bedrooms have a low height glazing with framed views towards the golf course

Second Floor - The Master's Domain

- The lift takes you to the next level of resort experience with a 1035 sq.ft. master suite, where you cross the bridge submerged inside the garden to reach your master bedroom
- Feel the luxury of living even in your dreams. sleep in 315 sq. ft. master bedroom on your king size 4 coaster bed perhaps, weaving dreams while being seated in your evening lounge facing towards a private terrace & golf course - a sight which is truly beautiful and mesmerizing
- The 140 sq.ft. master toilet gives you an another world experience with a shower /bathtub facing the golf course
- Flaunt your style statement in a separate 130 sq.ft. of his, her dresser & accessories island unit

The Terrace You'll Love To Spend Time On

- Let the writer with in you explore while sitting at the creative loft on the terrace which has a 15 ft. high extraordinary framed view
- Terraces are unique with Balinese style spa bed on the roof top which is also convertible into performance platform
- Proper chef's show kitchen along with a powder room planned purposely, to be used during a gathering or party
- The terrace has a store for keeping the soft furnishing safely in case of rain
- Pergolas shade the terrace, making the elevations dynamic & adding a vibrant look & feel by playful sun movement through out the day

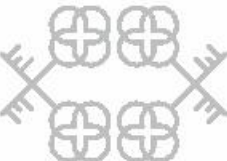


R I S E R E S O R T R E S I D E N C E S

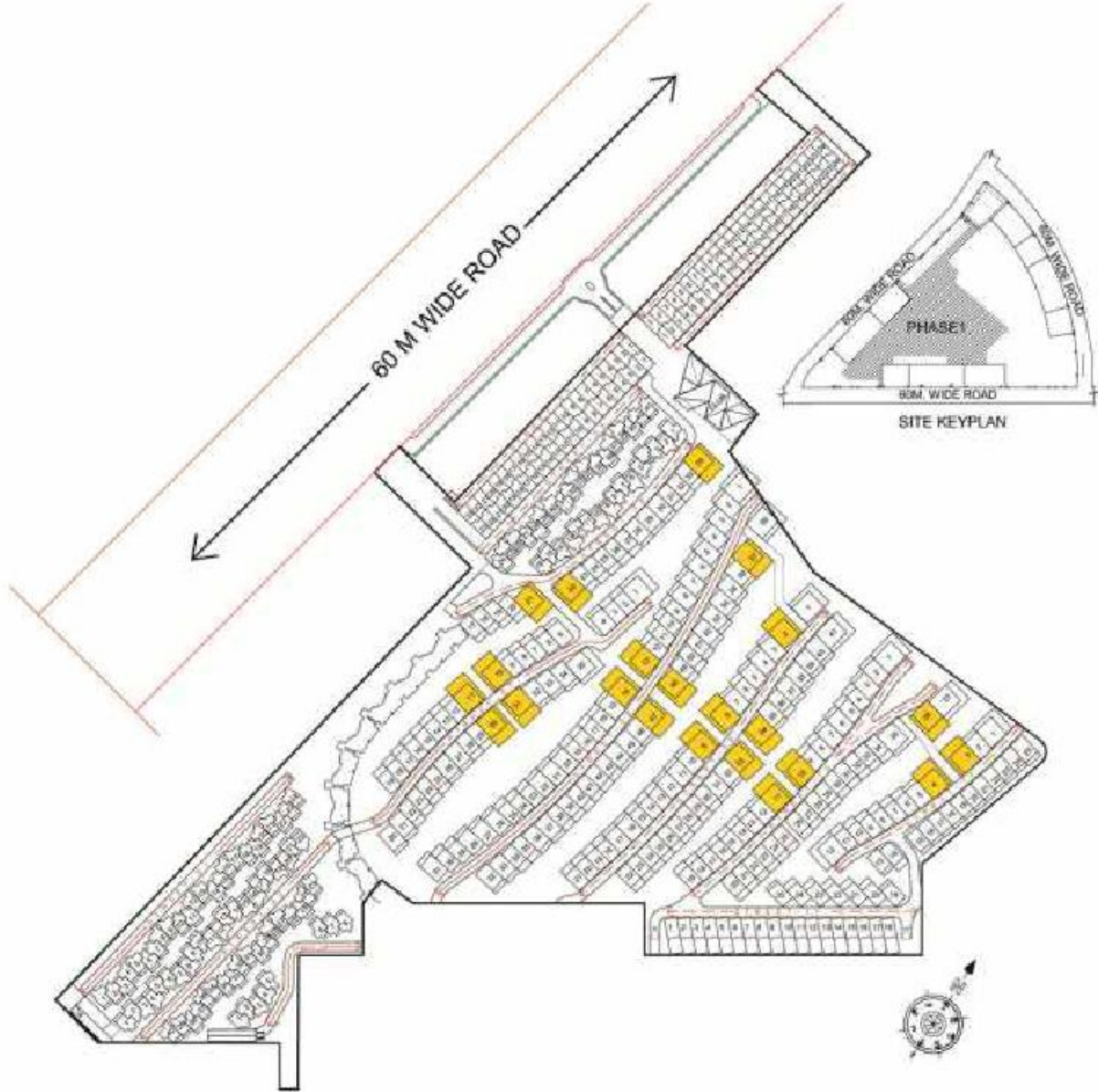


KEY PLAN

Name of Villa	Color	Location	Plot Size	Carpet Area Exclusive Area of Basement (Including Parking Area)	Built-up Area	Exclusive Garden + Terrace Area	Total Area of Unit
		Street Villa Number	(In Sq.Yd.)	(In Sq.Ft.)	(In Sq.Ft.)	(In Sq.Ft.)	(In Sq.Ft.)
			A	B	C	D	(C+D/2)
Type 7Y	Yellow	ST - 06 21,22,34	412	5435	6850	2010	7855
		ST - 07 10,11,30,31					
		ST - 08 13,14,47,48,57					
		ST - 09 02,08,09,33,34					
		ST - 10 10,11,36					
		ST - 12 03,04					



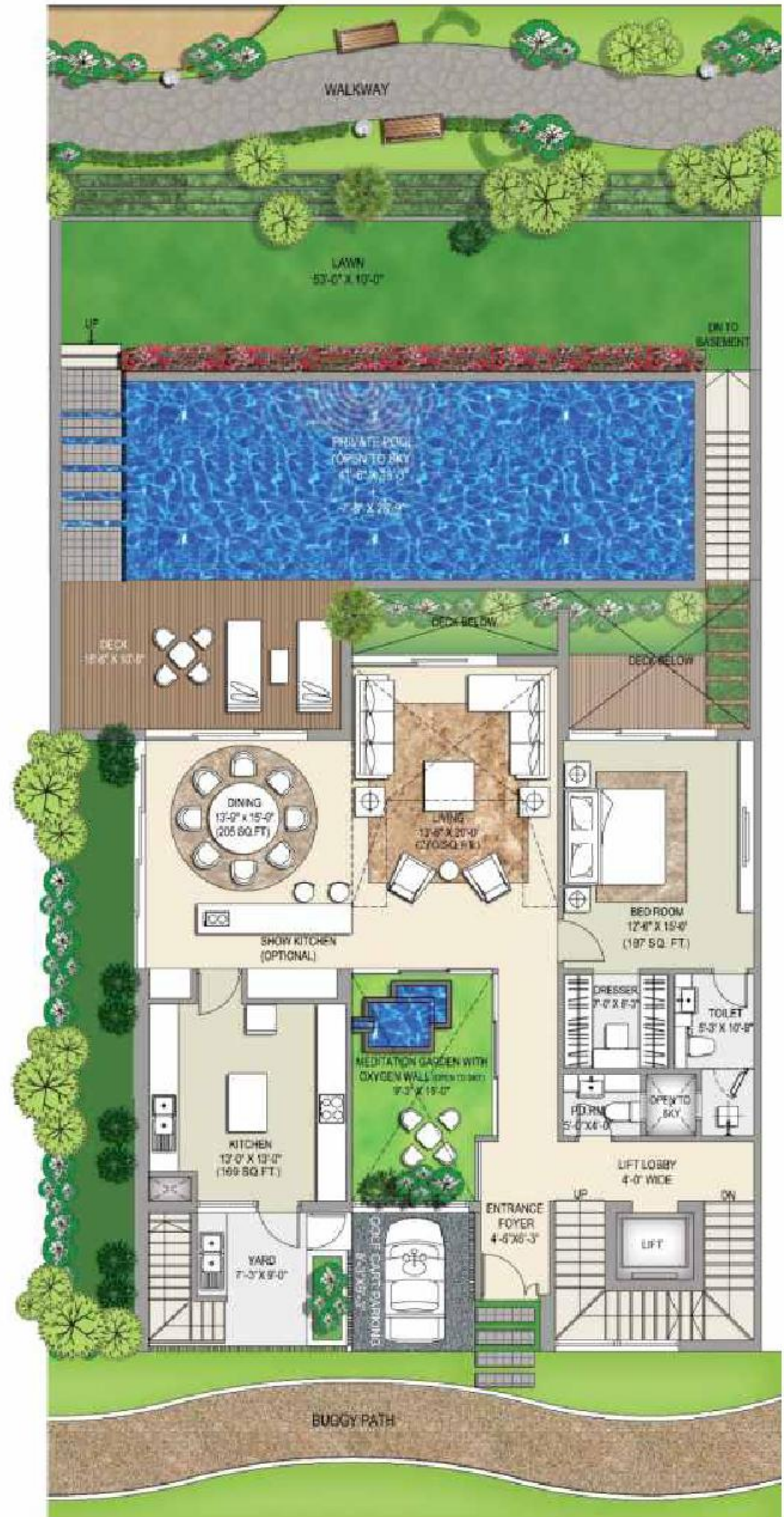
TYPE - 7Y GOLF MANSIONS



LOWER GROUND FLOOR



UPPER GROUND FLOOR



FIRST FLOOR



SECOND FLOOR



TERRACE FLOOR



ROOF PLAN

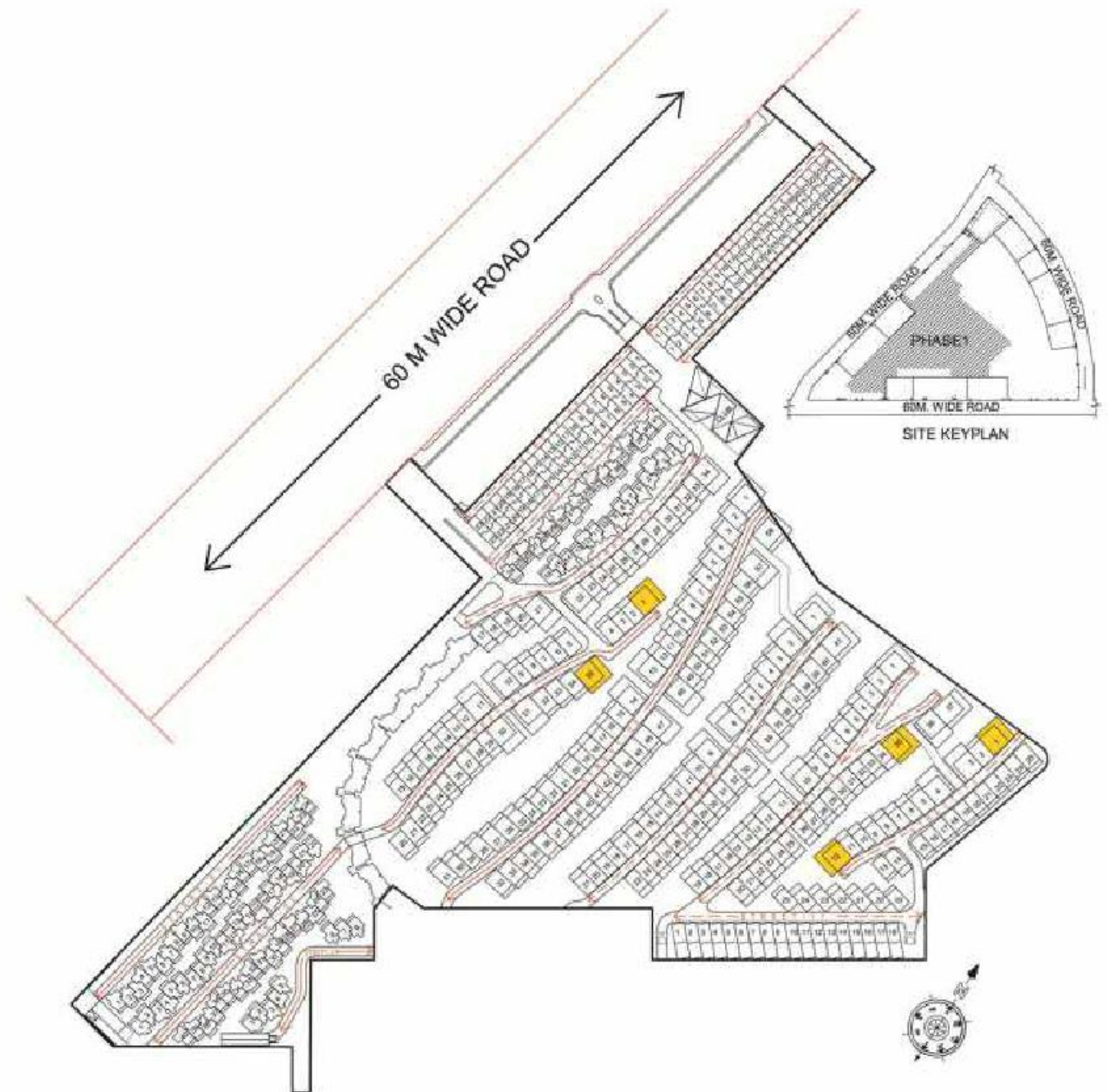


KEY PLAN

Name of Villa	Color	Location	Plot Size	Carpet Area Exclusive Area of Basement (Including Parking Area)	Built-up Area	Exclusive Garden + Terrace Area	Total Area of Unit
		Street	Villa Number	(In Sq.Yd.)	(In Sq.Ft.)	(In Sq.Ft.)	(In Sq.Ft.)
				A	B	C	D
							(C+D/2)
Type 7Z	Yellow	ST - 07 01,35 ST - 10 35 ST - 12 01,12	465	5435	7170	2150	8245



TYPE-7Z GOLF MANSIONS



LOWER GROUND FLOOR



UPPER GROUND FLOOR



FIRST FLOOR



TERRACE FLOOR



TERRACE FLOOR



ROOF FLOOR

